

Mixer Tap Skin Copper

Mixer Taps

Code: 8424 858



DETAILS

Mixer type	Single lever faucet with rotating barrel and flexible head.
------------	---

Coloring	Copper
----------	--------

Finish	PVD
--------	-----

Material	Stainless steel AISI 316
----------	--------------------------

Texture	Satin
---------	-------

Rotating angle	360°
----------------	------

Strengthening plate	ø50 mm
---------------------	--------

Cartridge	With ceramic discs
-----------	--------------------

Mixer hole	ø35 mm
------------	--------

Aesthetics parts

AISI 316 steel aesthetic parts with PVD treatment

Max worktop thickness

40 mm

FEATURES

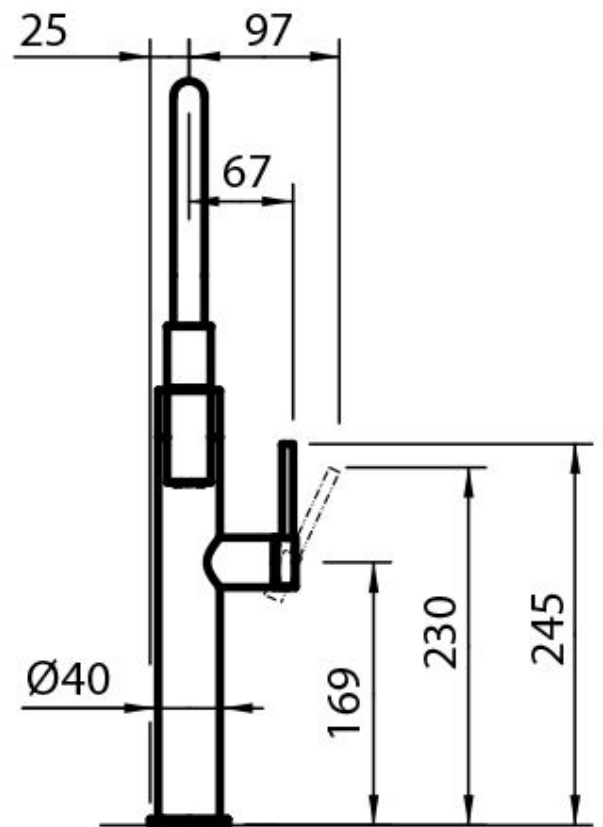
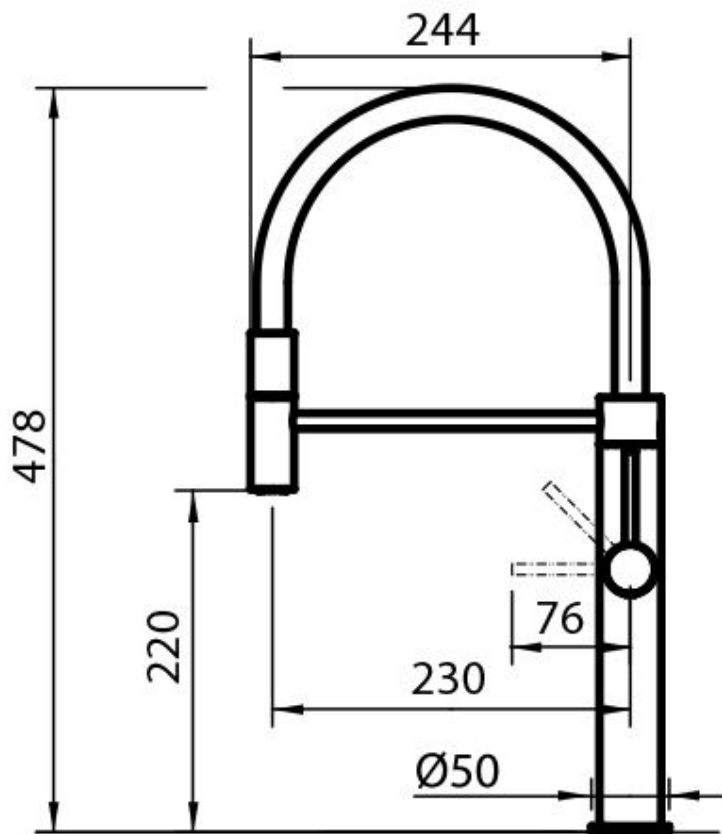
Rotating angle

All the taps have a wide angle of rotation. Some models even permit a full 360° rotation.

Strengthening plate

Foster's mixer taps are equipped with the strengthening plate that offers perfect stability on any sink.

TECHNICAL DATA



GALLERY

